



# New Homes Now Complete & Priced to Sell *Quickly!*



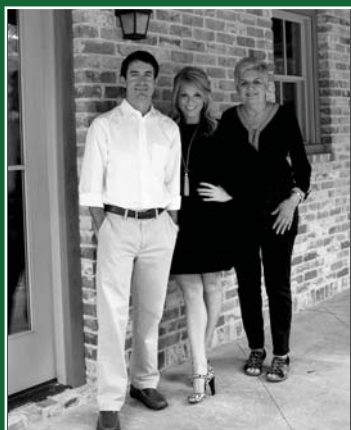
**1204 ELDRICK LANE**  
**\$239,900**  
5 Bedrooms | 3 Baths  
2517 Square Feet

**1208 ELDRICK LANE**  
**\$234,900**  
4 Bedrooms | 2.5 Baths  
2489 Square Feet



**1210 ELDRICK LANE**  
**\$236,900**  
4 Bedrooms | 2.5 Baths  
2579 Square Feet

**1206 ELDRICK LANE**  
**\$229,900**  
4 Bedrooms | 2.5 Baths  
2294 Square Feet



**Call the sales team to set up appointments!**

Brittany Hopkins VP/Site Manager 706.631.1983  
Beau Hopkins Site Agent 706.825.5842  
Ann Parham Site Agent 706.831.4963

**Meybohm**  
NEW HOMES®  
706.738.HOME

[www.brittanySELLSaugusta.com](http://www.brittanySELLSaugusta.com)



@brittanyhopkinsVP

I-20 Exit 190, right on Lewiston Rd, left on William Few Pkwy, left on Baker Place Rd, Hidden Creek on left.

**HIDDEN**  
CREEK